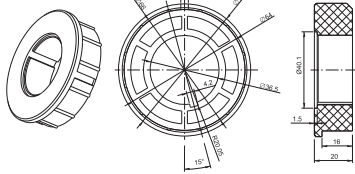


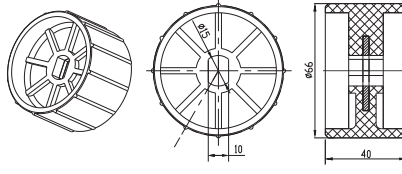
# Bagues diamètres 70, 75, 78

## Φ70 Tube(Round)

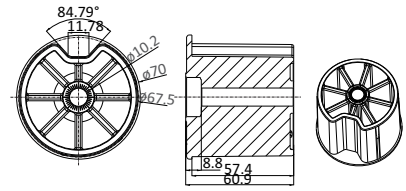
1.0404.0019 Bague de fin de course(Moteur AM45)



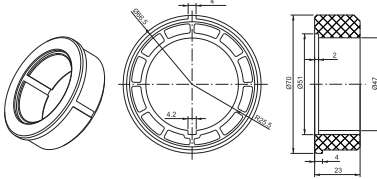
1.0400.0003 Bague d'entraînement (Moteur AM45)



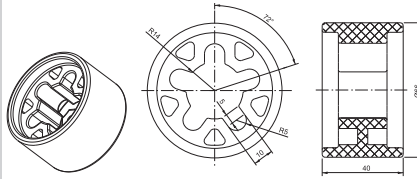
7.1000.0072 Bouchon (Axe carré)



1.0405.0011 Bague de fin de course(Moteur AM45)

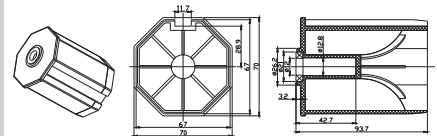


1.0405.0046 Bague d'entraînement (Moteur AM45)



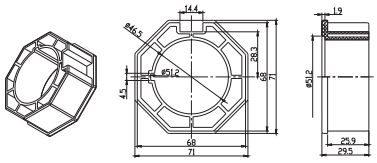
## Φ70 Tube (Octo.)

1.0405.0071 Bouchon(sans roulement)

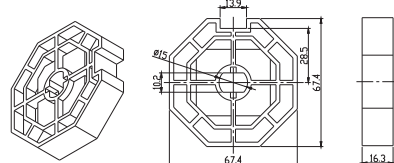


## Φ70 Tube(Octo)

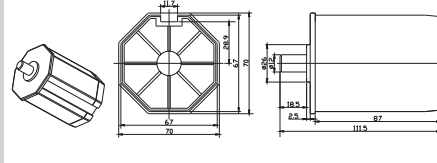
1.0405.0007 Bague de fin de course(Moteur AM45)



1.0405.0039 Bague d'entraînement (Moteur AM45)

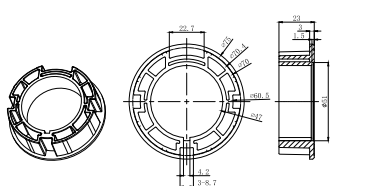


1.0405.0069 Bouchon (Axe round)

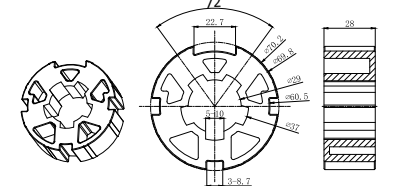


## Φ75 Tube

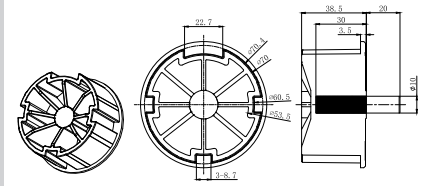
1.0405.0100 Bague de fin de course(Moteur AM45)



1.0405.0001 Bague d'entraînement (Moteur AM45)

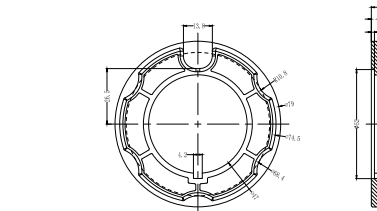


1.0405.0101 Bouchon (Axe round)



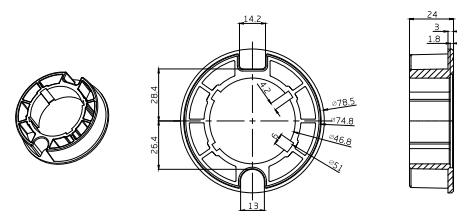
## Φ78 Tube

1.0405.0008 Bague de fin de course(Moteur AM45)

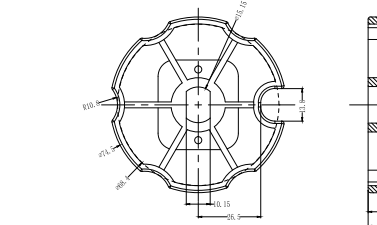


## Φ79 Tube

1.0405.0107 Bague de fin de course(Moteur AM45)



1.0405.0041 Bague d'entraînement (Moteur AM45)



1.0405.0108 Bague d'entraînement (Moteur AM45)

